

A Sustainable Future with Japanese Technology



JEFMA
Japan Environmental Facilities Manufacturers Association

Japan Environmental Facilities Manufacturers Association



A Sustainable Future with Japanese Technology

Huge amount of waste is being generated from our living. Day and night, waste is separated, collected, and then recycled, incinerated, ensuring our surrounding air and water is kept clean. JEFMA (Japan Environmental Sanitation Facilities Association) and its associate plant manufacturers have been contributing to this work through the construction and operation of waste treatment facilities, utilizing the world's most advanced technology. Furthermore, for the sake of young generations leading the future, we commit ourselves to realize a sustainable future by engaging in research, development and dissemination of technologies aiming the decarbonized and circular economy.

Message

It has been more than 60 years since Japan Environmental Facilities Manufacturers Association (JEFMA) was established in 1962 for the purpose of conserving the living environment through improving technological capability and providing proper waste treatment facilities.

Since then, we have actively contributed to waste treatment in Japan by developing and disseminating technology in response to the needs of society at the time, such as enhanced environmental conservation measures, reduction and recycling of waste, and high-efficiency energy recovery, while receiving guidance from related government agencies. Recently, frequent occurrence of extreme heat and heavy rains have made us realize the pressing of global warming. In face of these circumstances, building a sustainable society focused on future generations through decarbonization and establishing circular economy, has become the global issue.

Sharing awareness of these issues, JEFMA believes it is our mission to tackle these challenges by continuing to improve and utilize our technological capabilities.

We appreciate your continued support going forward.



Oshita Hajime Chairman

Japan Environmental Facilities
Manufacturers Association

Objectives and Activities

Japan Environmental Facilities Manufacturers Association consisting of plant manufacturers was established in 1962, which undertake design, manufacture and construction of environmental facilities. It now consists of 20 member currently.

Members of the Association mutually cooperate in aiming to achieve the following three objectives.

- (1) To improve technological capability and sound development for the whole industry
- (2) To contribute to conserving living environment and enhancing public health
- (3) To contribute to building a recycling-oriented society

The Association primarily conducts the following four businesses in order to achieve these three objectives.

- (1) Gathering and disseminating information, as well as raising public awareness, regarding environmental facilities
- (2) Investigation and research on facilities of planning, manufacture, construction, and operation and maintenance
- (3) Interaction and cooperation with relevant organizations in Japan and abroad regarding environmental facilities
- (4) Recommendation and cooperation regarding government policies on environmental facilities



A Glance of Activities of JEFMA

Overseas interaction and information gathering

Through overseas missions to advanced environmental facilities and participation in international forums in the Asia-Pacific region, we are gathering and sharing information on waste treatment technologies and systems, and exchanging with overseas stakeholders.

JEFMA also held a seminar (titled “Advanced Waste Management for Circular Economy & Energy Solutions”) in Japan Pavilion at COP29 (the 29th United Nations Climate Change Conference) hosted by the Republic of Azerbaijan in November 2024. In the seminar, we shared information on Japan’s experience on proper waste management and resulting greenhouse gas reduction using Japanese waste treatment technology, as well as technological trends for achieving carbon neutrality by 2050.



Surveys, information gathering and dissemination

We conduct surveys and information gathering about waste treatment and recycling, and share it on the website and publications.



Recommendation and cooperation regarding national policies

We contribute to smooth policy implementation through recommending national policies on waste disposal and recycling and providing technical information.

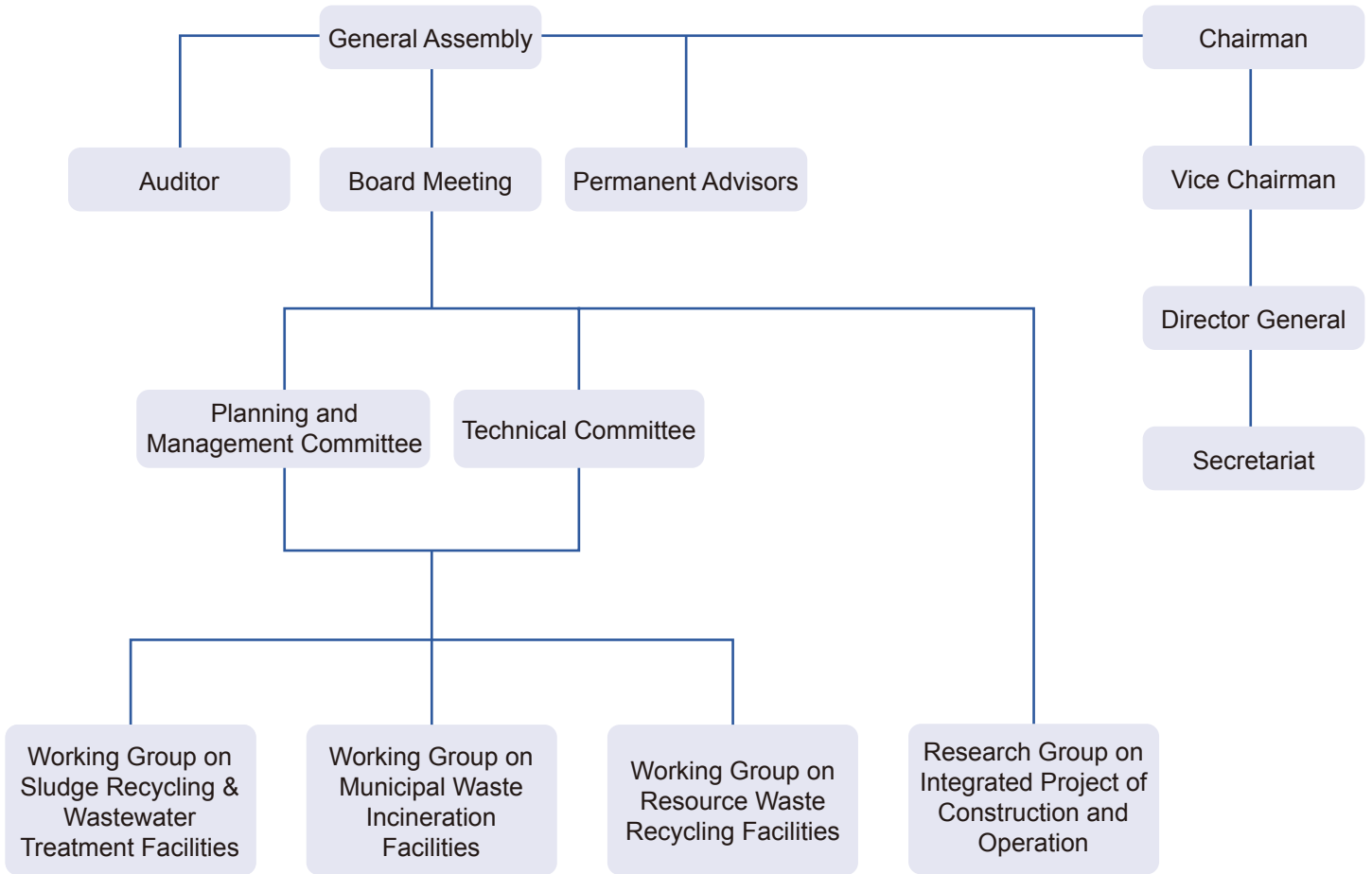


Cooperation for prompt restoration of damaged facilities and regional recovery in case of large-scale disasters

In case of disasters such as large earthquakes or floods, we assist national and local governments in line their requests to promptly restore damaged facilities and smoothly collect and treat disaster waste.



Organization



Member List



エクシオグループ株式会社

EXEO Group, Inc.



EBARA Environmental Plant Co., Ltd.



Technology for people and planet

Kanadevia Corporation



カナデビアE&E株式会社

Kanadevia E&E Corporation



KAWASAKI GIKEN CO., LTD.



Kawasaki Heavy Industries, Ltd.



Kyokuto Kaihatsu Kogyo Co., Ltd.



KUBOTA Corporation



クボタ環境エンジニアリング株式会社

KUBOTA Environmental Engineering Corporation



SANKI ENGINEERING CO., LTD.



JFE エンジニアリング 株式会社

JFE Engineering Corporation



KOBELCO ECO-SOLUTIONS CO., LTD.



ShinMaywa Industries, Ltd.



Swing Engineering Corporation



TAKUMA CO., LTD.



TSUKISHIMA JFE AQUA SOLUTION CO., LTD.



NISHIHARA Environment Co., Ltd.



NIPPON STEEL ENGINEERING CO., LTD.



Plantec Inc.



METAWATER Co., Ltd.

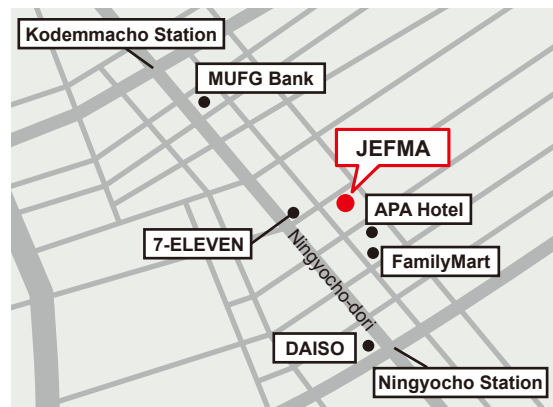
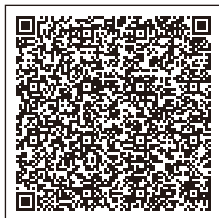
Note: This list indicates full members as of January 2025.



Japan Environmental Facilities Manufacturers Association

6F, Nihonbashi Koa Building
2-8-4 Nihonbashi-horidome-cho,
Chuo-ku, Tokyo 103-0012
Tel: 03-3668-1881
Fax: 03-3668-1882
E-mail: jefma@jefma.or.jp

MAP



<https://www.jefma.or.jp/>

JR

13-minute walk from Bakurocho Station on the Sobu Line (Rapid)
(West Exit ticket gates, toward Bakuroyokoyama Station [Exit A3])

Subway

5-minute walk from Ningyocho Station on the Hibiya Line (Exit A3 or A4)
5-minute walk from Ningyocho Station on the Toei Asakusa Line (Exit A3 or A4)
10-minute walk from Bakuroyokoyama Station on the Toei Shinjuku Line (Exit A3)